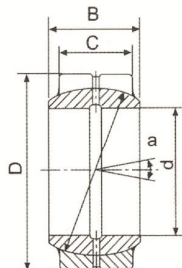
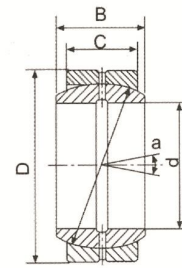


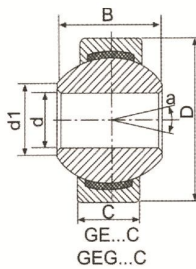
GE...ES
GEG...ES
GEZ...ES



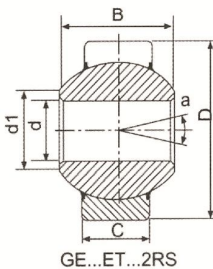
GE...ES...2R
GEG...ES...2RS
GEZ...ES...2RS



GE...DS



GE...C
GEG...C



GE...ET...2RS

GE...ES, GEG...ES-2RS Series

Features

- Outer ring with single split in axial direction.
- Lubrication grooves and holes in the outer and inner rings of type ES.
- Outer ring of type-2RS with two seals.
- Both outer and inner rings are properly phosphorlylate-treated.

GE...ES, GEG...ES-2RS Series

Features

- Outer ring with single split in axial direction.
- Lubrication grooves and holes in the outer and inner rings of type ES.
- Outer ring of type-2RS with two seals.
- Both outer and inner rings are properly phosphorlylate-treated.

GEZ...ES, GEG...ES-2RS Series

Features

- Outer ring with single split in axial direction.
- Lubrication grooves and holes in the outer and inner rings of type ES.
- Outer ring of type-2RS with two seals.
- Both outer and inner rings are properly phosphorlylate-treated.
- Dimensions in inch.

GE...DS Series

Features

- Outer ring with filling slot.
- Lubrication grooves and holes in the outer and inner rings.

GE...C, GEG...C Series

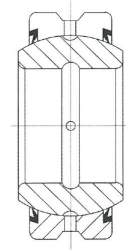
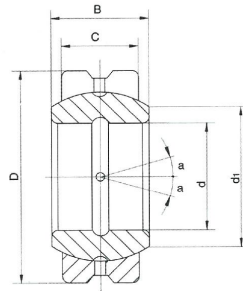
Features

- Outer ring pressed around inner ring, to line SF1 material on the surface of spherical plain.
- Spherical surface of inner ring with chromium plating.

GE...ET-2RS Series

Features

- Outer ring of type GE...ET-2RS with single split in axial direction.
- Outer ring with two seals, to line PTFE fabric on the surface.
- Spherical surface of inner ring with chromium plating.



GE-ES / GEG-ES

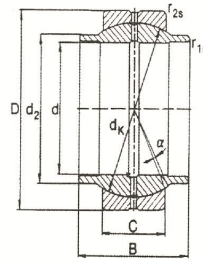
GE-ES-2RS / GEG-ES-2RS

Plain Bearings – Radial spherical plain bearings

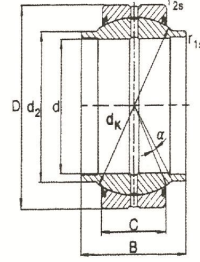
| Bearing No. | | Dimensions (mm) | | | | | Basic Dynamic Load Ratings (KN) | Basic Static Load Ratings (KN) | a ⁰ | | Weight (kg) |
|--------------|-----------|-----------------|---|---|---|--------|---------------------------------|--------------------------------|----------------|-----------|-------------|
| Without seal | With seal | d | D | B | C | d1 min | | | Without seal | With seal | |

| Normal series | | | | | | | | | | | |
|---------------|-------------|-----|-----|-----|----|-----|--------|-------|----|----|-------|
| GE 06 ES | - | 6 | 14 | 6 | 4 | 8 | 3.4 | 17 | 13 | - | 0.004 |
| GE 08 ES | - | 8 | 16 | 8 | 5 | 10 | 5.5 | 27.5 | 15 | - | 0.007 |
| GE 10 ES | - | 10 | 19 | 9 | 6 | 13 | 8.15 | 40.5 | 12 | - | 0.011 |
| GE 12 ES | - | 12 | 22 | 10 | 7 | 15 | 10.8 | 54 | 11 | - | 0.016 |
| GE 15 ES | GE 15 ES2RS | 15 | 26 | 12 | 9 | 18 | 17 | 85 | 8 | 8 | 0.026 |
| GE 16 ES | GE 16 ES2RS | 16 | 30 | 14 | 10 | 20 | 21.2 | 106 | 10 | 10 | 0.043 |
| GE 17 ES | GE 17 ES2RS | 17 | 30 | 14 | 10 | 21 | 21.2 | 106 | 10 | 10 | 0.039 |
| GE 20 ES | GE 20 ES2RS | 20 | 35 | 16 | 12 | 24 | 30 | 146 | 9 | 9 | 0.061 |
| GE 25 ES | GE 25 ES2RS | 25 | 42 | 20 | 16 | 29 | 48.28 | 255.6 | 7 | 4 | 0.119 |
| GE 30 ES | GE 30 ES2RS | 30 | 47 | 22 | 18 | 34 | 62.27 | 329.6 | 6 | 4 | 0.153 |
| GE 35 ES | GE 35 ES2RS | 35 | 55 | 25 | 20 | 39 | 79.90 | 423.0 | 6 | 4 | 0.233 |
| GE 40 ES | GE 40 ES2RS | 40 | 62 | 28 | 22 | 45 | 99.10 | 524.7 | 7 | 4 | 0.306 |
| GE 45 ES | GE 45 ES2RS | 45 | 68 | 32 | 25 | 50 | 127.50 | 675.0 | 7 | 4 | 0.427 |
| GE 50 ES | GE 50 ES2RS | 50 | 75 | 35 | 28 | 55 | 157.07 | 831.6 | 6 | 4 | 0.546 |
| GE 60 ES | GE 60 ES2RS | 60 | 90 | 44 | 36 | 66 | 244.80 | 1296 | 6 | 3 | 1.045 |
| GE 70 ES | GE 70 ES2RS | 70 | 105 | 49 | 40 | 77 | 312.80 | 1656 | 6 | 4 | 1.55 |
| GE 80 ES | GE 80 ES2RS | 80 | 120 | 55 | 45 | 88 | 401.60 | 2126 | 6 | 4 | 2.31 |
| GE 90 ES | GE 90 ES2RS | 90 | 130 | 60 | 50 | 98 | 490 | 2450 | 5 | 5 | 2.7 |
| GE 100 ES | GE 100ES2RS | 100 | 150 | 70 | 55 | 110 | 610 | 3050 | 7 | 7 | 4.3 |
| GE 110 ES | GE 110ES2RS | 110 | 160 | 70 | 55 | 121 | 655 | 3250 | 6 | 6 | 4.7 |
| GE 120 ES | GE 120ES2RS | 120 | 180 | 85 | 70 | 136 | 950 | 4750 | 6 | 6 | 8 |
| GE 140 ES | GE 140ES2RS | 140 | 210 | 115 | 70 | 156 | 1080 | 5400 | 7 | 7 | 11 |

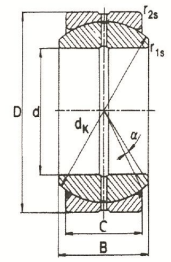
| Medium(G) series | | | | | | | | | | | |
|------------------|------------|----|-----|----|----|----|--------|-------|----|----|-------|
| GEG 15 ES | - | 15 | 30 | 16 | 10 | 19 | 22.4 | 56 | 16 | - | 0.05 |
| GEG 17 ES | GEG17ES2RS | 17 | 32 | 14 | 10 | 21 | 35 | 130 | 10 | 10 | 0.09 |
| GEG 20 ES | GEG20ES2RS | 20 | 42 | 25 | 16 | 24 | 48.28 | 255.6 | 17 | 16 | 0.153 |
| GEG 25 ES | GEG25ES2RS | 25 | 47 | 28 | 18 | 29 | 62.27 | 329.6 | 17 | 15 | 0.230 |
| GEG 30 ES | GEG30ES2RS | 30 | 55 | 32 | 20 | 34 | 79.90 | 423.0 | 17 | 16 | 0.304 |
| GEG 35 ES | GEG35ES2RS | 35 | 62 | 35 | 22 | 39 | 99.10 | 524.7 | 16 | 15 | 0.408 |
| GEG 40 ES | GEG40ES2RS | 40 | 68 | 40 | 25 | 44 | 127.50 | 675.0 | 17 | 12 | 0.542 |
| GEG 45 ES | GEG45ES2RS | 45 | 75 | 43 | 28 | 50 | 157.07 | 831.6 | 15 | 13 | 0.713 |
| GEG 50 ES | GEG50ES2RS | 50 | 90 | 56 | 36 | 57 | 244.80 | 1296 | 17 | 16 | 1.44 |
| GEG 60 ES | GEG60ES2RS | 60 | 105 | 63 | 40 | 67 | 312.80 | 1656 | 17 | 15 | 1.60 |
| GEG 70 ES | GEG70ES2RS | 70 | 120 | 70 | 45 | 77 | 401.60 | 2126 | 16 | 14 | 3.01 |
| GEG 80 ES | GEG80ES2RS | 80 | 130 | 75 | 50 | 87 | 490 | 2450 | 14 | 13 | 4.1 |
| GEG 90 ES | GEG90ES2RS | 90 | 150 | 85 | 55 | 98 | 610 | 3050 | 15 | 14 | 6.3 |



GE...LO



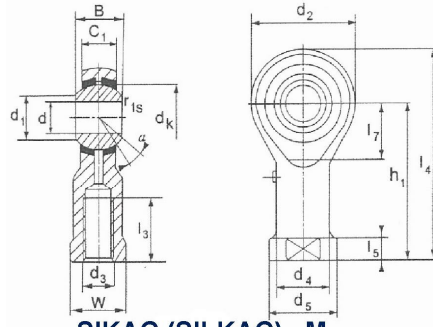
GE...HO-2RS



...ES ...ES2RS

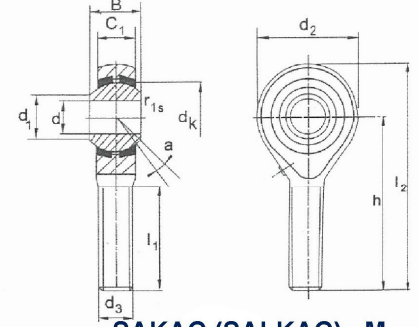
Plain Bearings – Radial spherical plain bearings

| Bearing No. | | Dimensions (mm) | | | | | Weight (Kg) |
|--------------|--------------|-----------------|------|---------|--------|--------|-------------|
| Without Seal | With Seals | d | D2 | D | B | C | |
| GE 20LO | | 20 | 25. | 35 | 20 | 12 | 0.070 |
| GE 25LO | | 25 | 30 | 42 | 25 | 16 | 0.12 |
| GE 32LO | | 32 | 38 | 52 | 32 | 18 | 0.20 |
| GE 40LO | | 40 | 46 | 62 | 40 | 22 | 0.34 |
| GE 50LO | | 50 | 57 | 75 | 50 | 28 | 0.56 |
| GE 63LO | | 63 | 71.5 | 95 | 63 | 36 | 1.2 |
| GE 70LO | | 70 | 79. | 105 | 70 | 40 | 1.7 |
| GE 80LO | | 80 | 91 | 120 | 80 | 45 | 2.4 |
| GE20 HO-2RS | | 20 | 24 | 35 | 24 | 12 | 0.057 |
| GE25 HO-2RS | | 25 | 29 | 42 | 29 | 16 | 0.10 |
| GE30 HO-2RS | | 30 | 34.2 | 47 | 30 | 18 | 0.14 |
| GE35 HO-2RS | | 35 | 40 | 55 | 35 | 20 | 0.24 |
| GE40 HO-2RS | | 40 | 45 | 62 | 38 | 22 | 0.29 |
| GE45 HO-2RS | | 45 | 51.5 | 68 | 40 | 25 | 0.43 |
| GE50 HO-2RS | | 50 | 56.5 | 75 | 43 | 28 | 0.54 |
| GE60 HO-2RS | | 60 | 67.7 | 90 | 54 | 36 | 1.1 |
| GE70 HO-2RS | | 70 | 78 | 105 | 65 | 40 | 1.6 |
| GE80 HO-2RS | | 80 | 90 | 120 | 74 | 45 | 2.4 |
| GEZ 12ES | GEZ 12ES-2RS | 12.7 | | 22.225 | 11.1 | 9.525 | 0.022 |
| GEZ 15ES | GEZ 15ES-2RS | 15.875 | | 26.988 | 13.894 | 11.913 | 0.036 |
| GEZ 19ES | GEZ 19ES-2RS | 19.05 | | 31.75 | 16.662 | 14.275 | 0.053 |
| GEZ 22ES | GEZ 22ES-2RS | 22.225 | | 36.513 | 19.431 | 16.662 | 0.085 |
| GEZ 25ES | GEZ 25ES-2RS | 25.04 | | 41.275 | 22.225 | 19.05 | 0.121 |
| GEZ 31ES | GEZ 31ES-2RS | 31.75 | | 50.8 | 24.762 | 23.8 | 0.232 |
| GEZ 34ES | GEZ 34ES-2RS | 34.924 | | 55.563 | 30.15 | 26.187 | 0.351 |
| GEZ 38ES | GEZ 38ES-2RS | 38.10 | | 61.913 | 33.325 | 28.575 | 0.422 |
| GEZ 44ES | GEZ 44ES-2RS | 44.45 | | 71.438 | 38.887 | 33.325 | 0.641 |
| GEZ 50ES | GEZ 50ES-2RS | 50.80 | | 80.963 | 44.45 | 38.10 | 0.932 |
| GEZ 57ES | GEZ 57ES-2RS | 57.15 | | 90.488 | 50.13 | 42.85 | 1.33 |
| GEZ 63ES | GEZ 63ES-2RS | 63.05 | | 10.013 | 55.55 | 47.625 | 1.85 |
| GEZ 69ES | GEZ 69ES-2RS | 69.85 | | 111.125 | 61.112 | 52.375 | 2.42 |
| GEZ 76ES | GEZ 76ES-2RS | 76.2 | | 120.65 | 66.675 | 57.15 | 3.10 |
| GEZ 82ES | GEZ 82ES-2RS | 82.55 | | 130.175 | 72.238 | 61.90 | 3.82 |
| GEZ 88ES | GEZ 88ES-2RS | 88.9 | | 139.70 | 77.775 | 66.675 | 4.79 |



SIKAC (SILKAC)...M

L - left-hand thread
M - Sliding contact surface combination: Steel/bronze



SAKAC (SALKAC)...M

Plain Bearings – Rod ends

| Bearing No. | Dimensions (mm) | | | | | | | | | | | | | | | Weight (kg) |
|-------------|-----------------|----------------|----|---------------------|----|---------------------|--------------------|---------------------|----------------|---------------------|--------------------|--------------------|----------------|----------------|----------------|-------------|
| | d | d ₃ | B | C ₁ Max. | W | l ₃ Min. | d ₂ Max | l ₄ Min. | h ₁ | l ₅ Max. | d ₄ Max | d ₅ Max | d _k | d ₁ | a ⁰ | |
| SI(L)KAC5 | 5 | M5 | 8 | 6 | 9 | 14 | 18 | 36 | 27 | 4 | 8.5 | 11 | 11.11 | 7.7 | 13 | 0.016 |
| SI(L)KAC6 | 6 | M6 | 9 | 6.75 | 11 | 14 | 20 | 40 | 30 | 5 | 10 | 13 | 12.7 | 9 | 13 | 0.022 |
| SI(L)KAC8 | 8 | M8 | 12 | 9 | 14 | 17 | 24 | 48 | 36 | 5 | 12.5 | 16 | 15.875 | 10.4 | 4 | 0.047 |
| SI(L)KAC10 | 10 | M10 | 14 | 10.5 | 17 | 21 | 26 | 56 | 43 | 6.5 | 15 | 19 | 19.05 | 12.9 | 13 | 0.077 |
| SI(L)KAC12 | 12 | M12 | 16 | 12 | 19 | 24 | 30 | 65 | 50 | 6.5 | 17.5 | 22 | 22.225 | 15.4 | 13 | 0.10 |
| SI(L)KAC14 | 14 | M14 | 19 | 13.5 | 22 | 27 | 34 | 74 | 57 | 8 | 20 | 26 | 25.4 | 16.9 | 16 | 0.16 |
| SI(L)KAC16 | 16 | M16 | 21 | 15 | 24 | 33 | 40 | 84 | 64 | 8 | 22 | 28 | 28.575 | 19.4 | 15 | 0.22 |
| SI(L)KAC18 | 18 | M18X1.5 | 23 | 16.5 | 27 | 36 | 44 | 93 | 71 | 10 | 25 | 31 | 31.75 | 21.9 | 15 | 0.32 |
| SI(L)KAC20 | 20 | M20X1.5 | 25 | 18 | 30 | 40 | 48 | 101 | 77 | 10 | 27.5 | 35 | 34.925 | 24.4 | 14 | 0.42 |
| SI(L)KAC22 | 22 | M22X1.5 | 28 | 20 | 32 | 43 | 54 | 111 | 84 | 12 | 30 | 38 | 38.10 | 25.8 | 5 | 0.54 |
| SI(L)KAC25 | 25 | M24X2 | 31 | 22 | 36 | 48 | 60 | 124 | 94 | 12 | 33.5 | 42 | 42.85 | 29.6 | 5 | 0.73 |
| SI(L)KAC28 | 28 | M27X2 | 35 | 24 | 41 | 53 | 66 | 136 | 103 | 14 | 37 | 46 | 47.6 | 32.3 | 15 | 0.98 |
| SI(L)KAC30 | 30 | M30X2 | 37 | 25 | 46 | 56 | 70 | 145 | 110 | 15 | 40 | 50 | 50.08 | 34.8 | 17 | 1.1 |

| Bearing No. | Dimensions (mm) | | | | | | | | | | | | Weight (kg) |
|-------------|-----------------|----------------|----|---------------------|---------------------|--------------------|-----|---------------------|----------------|-----------------|----------------|----------------|-------------|
| | d | d ₃ | B | C ₁ Max. | l ₁ Min. | d ₂ Max | h | l ₂ Max. | d _k | r _{1s} | a ⁰ | d ₁ | |
| SA(L)KAC5 | 5 | M5 | 8 | 6 | 20 | 18 | 33 | 42 | 11.11 | 0.3 | 13 | 7.7 | 0.013 |
| SA(L)KAC6 | 6 | M6 | 9 | 6.75 | 23 | 20 | 36 | 46 | 12.7 | 0.3 | 13 | 9 | 0.020 |
| SA(L)KAC8 | 8 | M8 | 12 | 9 | 25 | 24 | 42 | 54 | 15.875 | 0.3 | 4 | 10.4 | 0.030 |
| SA(L)KAC10 | 10 | M10 | 14 | 10.5 | 30 | 26 | 48 | 61 | 19.05 | 0.3 | 13 | 12.9 | 0.055 |
| SA(L)KAC12 | 12 | M12 | 16 | 12 | 34 | 30 | 54 | 69 | 22.225 | 0.3 | 13 | 15.4 | 0.085 |
| SA(L)KAC14 | 14 | M14 | 19 | 13.5 | 37 | 34 | 60 | 77 | 25.4 | 0.3 | 16 | 16.9 | 0.14 |
| SA(L)KAC16 | 16 | M16 | 21 | 15 | 41 | 40 | 66 | 86 | 28.575 | 0.3 | 15 | 19.4 | 0.21 |
| SA(L)KAC18 | 18 | M18X1.5 | 23 | 16.5 | 45 | 44 | 72 | 94 | 31.75 | 0.3 | 15 | 21.9 | 0.28 |
| SA(L)KAC20 | 20 | M20X1.5 | 25 | 18 | 48 | 48 | 78 | 102 | 34.925 | 0.3 | 14 | 24.4 | 0.38 |
| SA(L)KAC22 | 22 | M22X1.5 | 28 | 20 | 52 | 54 | 84 | 111 | 38.10 | 0.3 | 5 | 25.8 | 0.48 |
| SA(L)KAC25 | 25 | M24X2 | 31 | 22 | 58 | 60 | 94 | 124 | 42.85 | 0.3 | 5 | 29.6 | 0.64 |
| SA(L)KAC28 | 28 | M27X2 | 35 | 24 | 63 | 66 | 103 | 136 | 47.6 | 0.3 | 15 | 32.3 | 0.96 |
| SA(L)KAC30 | 30 | M30X2 | 37 | 25 | 67 | 70 | 110 | 145 | 50.08 | 0.3 | 17 | 34.8 | 1.1 |