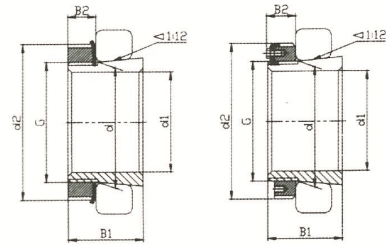


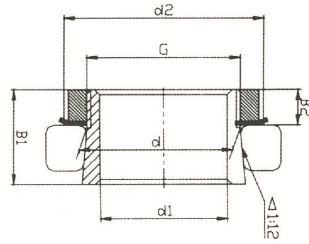
H200 - H300



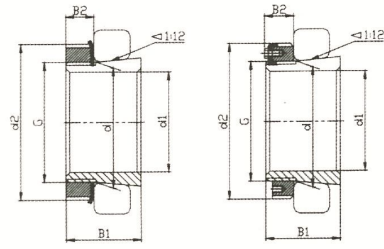
H2300

Adapter Sleeves

Bearing No.	Dimensions (mm)				Composition		Weight (kg)
	d	d ₂	B ₁	B ₂	Locknut	Lockwasher	
H204	20	32	24	7	KM4	MB4	0.04
H205	25	38	26	8	KM5	MB5	0.07
H206	30	45	27	8	KM6	MB6	1.10
H207	35	52	29	9	KM7	MB7	0.13
H208	40	58	31	10	KM8	MB8	0.17
H209	45	65	33	11	KM9	MB9	0.23
H210	50	70	35	12	KM10	MB10	0.27
H211	55	75	37	12	KM11	MB11	0.31
H212	60	80	38	13	KM12	MB12	0.35
H213	65	85	40	14	KM13	MB13	0.40
H214	70	92	41	14	KM14	MB14	0.60
H215	75	98	43	15	KM15	MB15	0.71
H216	80	105	46	17	KM16	MB16	0.88
H217	85	110	50	18	KM17	MB17	1.02
H218	90	120	52	18	KM18	MB18	1.20
H219	95	124	55	19	KM19	MB19	1.35
H220	100	130	58	20	KM20	MB20	1.50
H221	105	140	60	20	KM21	MB21	1.70
H222	110	145	63	21	KM22	MB22	1.90
H304	20	32	28	7	KM4	MB4	0.045
H305	25	38	29	8	KM5	MB5	0.075
H306	30	45	31	8	KM6	MB6	0.110
H307	35	52	35	9	KM7	MB7	0.140
H308	40	58	36	10	KM8	MB8	0.190
H309	45	65	39	11	KM9	MB9	0.250
H310	50	70	42	12	KM10	MB10	0.300
H311	55	75	45	12	KM11	MB11	0.350
H312	60	80	47	13	KM12	MB12	0.390
H313	65	85	50	14	KM13	MB13	0.460
H314	70	92	52	14	KM14	MB14	0.720
H315	75	98	55	15	KM15	MB15	0.830
H316	80	105	59	17	KM16	MB16	1.000
H317	85	110	63	18	KM17	MB17	1.200
H318	90	120	65	18	KM18	MB18	1.350
H319	95	124	68	19	KM19	MB19	1.550
H320	100	130	71	20	KM20	MB20	1.700
H321	105	140	74	20	KM21	MB21	1.950
H322	110	145	74	21	KM22	MB22	2.200



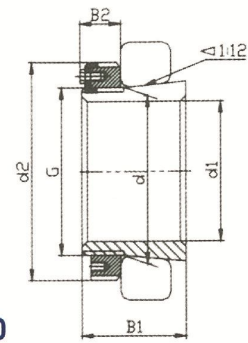
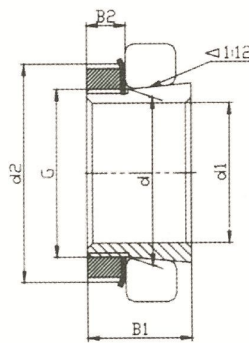
H200 - H300



H2300

Adapter Sleeves

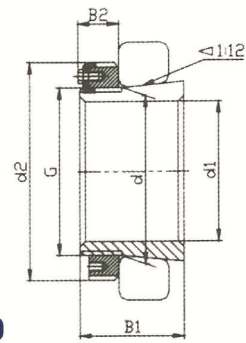
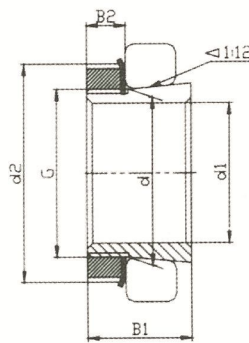
Bearing No.	Dimensions (mm)				Composition		Weight (kg)
	d	d2	b1	b2	Locknut	Lockwasher	
H2304	20	32	31	7	KM4	MB4	0.049
H2305	25	38	35	8	KM5	MB5	0.087
H2306	30	45	38	8	KM6	MB6	1.126
H2307	35	52	43	9	KM7	MB7	0.170
H2308	40	58	46	10	KM8	MB8	0.224
H2309	45	65	50	11	KM9	MB9	0.280
H2310	50	70	55	12	KM10	MB10	0.362
H2311	55	75	59	12	KM11	MB11	0.420
H2312	60	80	62	13	KM12	MB12	0.481
H2313	65	85	65	14	KM13	MB13	0.557
H2314	70	92	68	14	KM14	MB14	0.900
H2315	75	98	73	15	KM15	MB15	1.050
H2316	80	105	78	17	KM16	MB16	1.280
H2317	85	110	82	18	KM17	MB17	1.450
H2318	90	120	86	18	KM18	MB18	1.690
H2319	95	124	90	19	KM19	MB19	1.920
H2320	100	130	97	20	KM20	MB20	2.150
H2321	105	140	101	20	KM21	MB21	2.540
H2322	110	145	105	21	KM22	MB22	2.750
H2324	120	155	112	22	KM24	MB24	3.200
H2326	130	165	121	23	KM26	MB26	4.600
H2328	140	180	131	24	KM28	MB28	5.550
H2330	150	195	139	26	KM30	MB30	6.630
H2332	160	210	147	28	KM32	MB32	9.150
H2334	170	220	154	29	KM34	MB34	10.200
H2336	180	230	161	30	KM36	MB36	11.300
H2338	190	240	169	31	KM38	MB38	12.600
H2340	200	250	176	32	KM40	MB40	14.00
H2344	220	280	186	44	HM44		16.700
H2348	240	300	199	46	KM48		29.700
H2352	260	330	211	49	KM52		24.200
H2356	280	350	224	51	KM56		27.800



H3000 - H3100

Adapter Sleeves

Bearing No.	Dimensions (mm)				Composition		Weight (kg)
	d	d ₂	B ₁	B ₂	Locknut	Lockwasher	
H3024	120	145	72	22	KM24	MB24	1.95
H3026	130	155	80	23	KM26	MB26	2.85
H3028	140	165	82	24	KM28	MB28	3.15
H3030	150	180	87	26	KM30	MB30	3.90
H3032	160	190	93	28	KM32	MB32	5.20
H3034	170	200	101	29	KM34	MB34	6.00
H3036	180	210	109	30	KM36	MB36	6.85
H3038	190	220	112	31	KM38	MB38	7.45
H3040	200	240	120	32	KM40	MB40	9.20
H3044	220	260	126	41	KM44		10.50
H3048	240	290	133	46	KM48		13.00
H3052	260	310	145	46	KM52		15.50
H3056	280	330	152	50	KM56		17.50
H3060	300	360	168	54	KM60		23.00
H3064	320	380	171	55	KM64		24.50
H3068	340	400	187	58	KM68		28.50
H3072	360	420	188	58	KM72		30.50
H3076	380	450	193	62	KM76		36.00
H3080	400	470	210	66	KM80		41.50
H3084	420	490	212	66	KM84		43.50
H3088	440	520	228	77	KM88		65.20
H3092	460	540	234	77	KM92		69.50



H3000 - H3100

Adapter Sleeves

Bearing No.	Dimensions (mm)				Composition		Weight (kg)
	d	d ₂	B ₁	B ₂	Locknut	Lockwasher	
H3120	100	130	76	20	KM20	MB20	1.80
H3122	110	145	81	21	KM22	MB22	2.40
H3124	120	155	88	22	KM24	MB24	2.65
H3126	130	165	92	23	KM26	MB26	3.65
H3128	140	180	97	24	KM28	MB28	4.35
H3130	150	190	111	26	KM30	MB30	5.50
H3132	160	210	119	28	KM32	MB32	7.65
H3134	170	220	122	29	KM34	MB34	8.40
H3136	180	240	131	30	KM36	MB36	9.50
H3138	190	260	141	31	KM38	MB38	11.00
H3140	200	290	150	32	KM40	MB40	12.00
H3144	220	310	161	44	KM44		15.00
H3148	240	330	172	46	KM48		18.00
H3152	260	360	190	49	KM52		22.50
H3160	300	400	208	53	KM60		30.00
H3164	320	420	226	56	KM64		35.00
H3168	340	450	254	72	KM68		
H3172	360	470	259	75	KM72		
H3176	380	490	264	77	KM76		
H3180	400	520	272	82	KM80		
H3184	420	540	304	90	KM84		
H3188	440	560	307	90	KM88		
H3192	460	580	326	95	KM92		
H3196	480	620	335	95	KM96		